



Thank You for choosing THE BIKEMATE TRADING AND CO. for your jersey designs. We have compiled this document for you to know the patterns we used in your unique jerseys.



MARGINS:

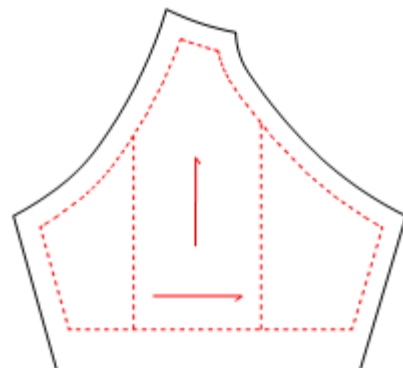
Each piece of your custom jersey design has an Art Margin associated with it. These margins indicate an area that has been reserved for sewing during production of your jerseys. For this reason, Foreground Art (such as logos, text, etc.) is not allowed to exceed these margins. Background Art (secondary design elements, backgrounds, etc.) is allowed to encroach these areas, but it is important to note that a portion of these areas will be cut off and/or sewn up in production.



Sleeve Margins:

The sleeve panels of your jersey have an extra margin associated with them. It is located in the direct [optical] center of the sleeve, and its purpose is to ensure that your sleeve art is visible when the garment is worn.

If logos and/or text are placed in these areas, and are too wide, we have found that the artwork will wrap around the arm, causing the artwork to become difficult or impossible to read while worn.



Pocket Margins:

Artwork is allowed to continue from the rear panel of your jersey onto the pocket. It is important to note, however, that a portion of the design may be lost in the area where the elastic of the rear pocket is sewn in. The area most affected by this is in-between the pocket margin and the top of the pocket (the black line on our Design Templates).

The rear pocket of your jersey will be sewn into three separate pockets. For this reason, it is important to note that stitching will run through the areas designated by the Margin on our Design Templates. While you may choose to have design elements run through those areas, in doing so, you are giving your approval to allow stitching to run through your design

